

ISMT LIMITED		Regd. Office: Lunked Towers, Viman Nagar, Pune 411 014, Maharashtra. Phone: 020-41434100 Fax: 020-26630779 E-mail: secretarial@ismt.co.in Web: www.ismt.com CIN: L27109PN1999PLC016417					
EXTRACT OF THE STATEMENT OF FINANCIAL RESULTS FOR THE QUARTER AND YEAR ENDED MARCH 31, 2016							
Sr. No.	Particulars	STANDALONE				CONSOLIDATED	
		Quarter Ended		Year Ended		Year Ended	
		31/03/2016	31/03/2015	31/03/2016	31/03/2015	31/03/2016	31/03/2015
		Unaudited	Unaudited	Audited	Audited	Audited	Audited
1.	Total Income from Operations (Net)	243.00	359.80	991.68	1,504.50	1,014.75	1,522.95
2.	Net Profit / (Loss) from ordinary activities after tax	(101.51)	(26.95)	(362.21)	(220.99)	(394.81)	(188.10)
3.	Net Profit / (Loss) for the period after tax (after Extraordinary items, Share of Minority Interest and Associate)	(101.51)	(26.95)	(362.21)	(220.99)	(394.78)	(188.08)
4.	Paid-up Equity Share Capital (Face Value of ₹ 5/- per share)	73.25	73.25	73.25	73.25	73.25	73.25
5.	Reserves (excluding Revaluation Reserve as per Balance Sheet of previous year)	(343.46)	(4.23)	(343.46)	(4.23)	(403.28)	(46.72)
6.	Earnings per share (before extraordinary items and after Share of Minority Interest and Associate) (of ₹ 5/- each) Basic and Diluted (*)	(6.93)	(1.84)	(26.09)	(15.08)	(26.95)	(12.84)
7.	Earnings per share (after extraordinary items and Share of Minority Interest and Associate) (of ₹ 5/- each) Basic and Diluted (*)	(6.93)	(1.84)	(26.09)	(15.08)	(26.95)	(12.84)

Notes: 1. The above is an extract of the detailed format of Quarterly and Annual Financial Results filed with the Stock Exchanges under Regulation 33 of the SEBI (Listing Obligations and Disclosure Requirements) Regulations, 2015. The Full format of the Quarterly/ Annual Financial Results are available on the Stock Exchange websites (www.nseindia.com & www.bseindia.com) and also on the Company's website (www.ismt.com).

2. The Auditors have qualified the Financial Results in respect of Investment in and receivables from a subsidiary company, Recoverability of amounts from Maharashtra State Electricity Distribution Company Limited and Minimum Alternate Tax Entitlement. The details of the same forms part of the Audited Financial Results which are available on the aforesaid websites.

3. The above results have been reviewed by the Audit Committee and approved by the Board of Directors at their respective meetings held on May 27, 2016.

Place : Pune
Date : May 27, 2016

For ISMT Limited
Rajiv Goel
Chief Financial Officer

DELTA INDUSTRIAL
Regd. Off: 325, 3rd
Sector-14, Rohini,
Tel: +91-11-64553555
Email ID: delta@
CIN: L52110DI
ADDI
This is further to the M
M/s Delta Industrial Re
on 19th May, 2016 in
and "Jansatta" newsp
held on 27th May, 2
agenda items is not c
adjourned for Monday
P.M. at the Registered
consider and approv
Results for the quarter
31, 2016 and on othe
For further details visit
i.e. http://www.dirl.in
where the securities a
on BSE Limited i.e. http
Metropolitan Stock Ex
i.e. http://www.mseil.in
For Delta Indust
Place: New Delhi
Date: 27.05.2016

FINANCIERS Au FINANCIERS (INDIA) LIMITED
(CIN: U36911RJ1996PLC011381)
Registered Office:- 19-A, Dhuleshwar Garden, Ajmer Road, Jaipur 302001, Rajasthan (INDIA)
Phone No. : +91-141-4110060, Fax No : +91- 141-4110090 Website : www.aufin.in
Statement of Audited Financials Results for the year ended March 31, 2016

Particulars	Half year ended		Accounting year ended	Ac
	March 31, 2016	March 31, 2015	March 31, 2016	
	Unaudited	Unaudited	Audited	
1. Interest earned & other operating income (a)+(b)+(c)+(d)	576.25	380.18	1,010.46	
(a) Interest on loans/advances (Including off-balance sheet loans & advances and PTC)	571.78	373.06	1,000.50	
(b) Income on investments	-	-	-	
(c) Interest on balances with Reserve Bank of India and other inter bank funds	-	-	-	
(d) Others	4.47	7.12	9.96	
2. Other income	4.07	2.06	5.02	
3. Total income (1+2)	580.32	382.24	1,015.48	
4. Interest & other financial expenses	224.68	143.37	395.25	
5. Operating expenses (i)+(ii)	153.32	88.62	257.74	
(i) Employees cost	89.30	51.57	157.73	
(ii) Other operating expenses	64.02	37.05	100.01	
6. Total expenditure (4+5) excluding provisions and contingencies	378.00	231.99	652.99	
7. Operating profit before provisions and contingencies (3-6)	202.32	150.25	362.49	
8. Provisions (other than tax) and contingencies	4.60	18.88	39.84	
9. Prior period item				
10. Profit (+)/ loss (-) from ordinary activities before tax (7-8-9)	197.72	131.37	322.65	
11. Tax expense	68.14	42.88	111.03	
12. Net Profit(+)/ loss(-) from ordinary activities after tax (10-11)	129.58	88.49	211.62	
13. Extraordinary items (net of tax expense)				
14. Net profit (+)/ loss (-) for the period (12-13)	129.58	88.49	211.62	
15. Paid-up equity share capital (Face Value of Rs. 10 each)	44.08	44.08	44.08	
16. Reserves excluding revaluation reserves (As per balance sheet of previous accounting year)			965.35	
17. Analytical ratios				
(i) Capital adequacy ratio	17.10%	18.54%	17.10%	
(ii) Earnings Per Share (EPS)*				
--Basic	29.39	20.21	48.01	
--Diluted	29.07	20.21	47.70	
18. NPA ratios				
a) Amount of gross NPA	74.14	55.31	74.14	
Amount of net NPA	46.80	25.68	46.80	
b) % of gross NPA	0.88%	0.95%	0.88%	
% of net NPA	0.56%	0.44%	0.56%	
c) Return on assets	1.72%	1.54%	2.98%	

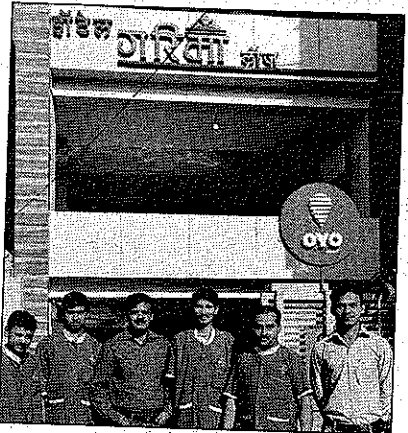
*EPS, DPS and Return on assets for the half year ended March 31, 2016 and March 31, 2015 are not annualised.

Notes:

- The above results for the year ended March 31, 2016 have been audited by the Statutory Auditors of the Company and have been reviewed by the Audit Committee approved by the Board of Directors at their respective meetings held on May 27, 2016, in accordance with the requirement of Regulation 52 of the SEBI (Listing and Disclosure Requirements) Regulations, 2015.
- The figures for six-months ended March 31, 2016 are the balancing figures between audited figures in respect of the full financial year upto March 31, 2016 and unaudited published year-to-date figures for six-months ended September 30, 2015, which were subjected to limited review.
- The Company operates in a single reportable segment i.e. lending to borrowers, which have similar risks and returns for the purpose of AS 17 on 'Segment Reporting'.

गारा...

सिंहगड एक्सप्रेस आज रद्द



ल्ले
नून
ला
या
आ
सा
री
ल
चे
य
री
ये

पणार या कर्मचाऱ्यांना मिळतो. मात्र त्याचबरोबर राहणे आणि जेवणाचीही सोय होते. त्यामुळे आपला खर्च भागवून गावातील घरीही थोडी आर्थिक मदत करणे त्यांना शक्य होते आहे. त्या मदतीवर या कर्मचाऱ्यांची कुटुंबेही उभी राहिली आहेत.

प्रतिनिधी, पुणे

मुंबईतील रेल्वेच्या ब्लॉकमुळे पुण्याहून सुटणारी रविवारची पुणे- मुंबई सिंहगड एक्सप्रेस रद्द करण्यात येणार असल्याची माहिती मध्य रेल्वेकडून देण्यात आली. कुर्लाजवळ रेल्वे पादचारी पुलाचे काम करण्यात

येणार आहे. त्यासाठी विविध गाड्या रद्द करण्यात येणार आहेत. त्यात सिंहगड एक्सप्रेसचा समावेश आहे. या गाडीच्या पुणे- मुंबई व मुंबई- पुणे या दोन्ही फेऱ्या रविवारी रद्द करण्यात येणार असल्याचे सांगण्यात आले.



सैनिकी मुलींचे वसतिगृह कलीना, सांताक्रूज व मालवणी (मालाड) येथे सवलतीच्या दराने शैक्षणिक वर्ष २०१६-१७ करिता प्रवेशासाठी आवाहन

सैनिकी मुलींचे वसतिगृह कलीना, सांताक्रूज व सैनिकी मुलांचे वसतिगृह, मालवणी (मालाड) येथे आजी-माजी सैनिक/युद्धविधवा/ अपंग माजी सैनिक यांचे जे पाल्य महाविद्यालयांत शिक्षण घेत आहेत त्यांच्यासाठी शैक्षणिक वर्ष २०१६-१७ करिता सैनिकी मुली/मुलांचे वसतिगृहांत प्रवेशासाठी दिनांक १ जून २०१६ पासून प्रवेशपुस्तिका अर्ज विक्री सुरू होणार आहे. प्रवेश अर्ज स्वीकारण्याची अंतिम तारीख १५ जुलै २०१६ राहिल. प्रवेशप्रक्रिया ही जिल्हा निवड समितीद्वारा माहे ऑगस्ट महिन्याच्या पहिल्या आठवड्यात कलीना आणि मालवणी (मालाड) येथे पूर्ण करण्यात येणार आहे. युद्धविधवा/माजी सैनिकांच्या अनाथ पाल्यांना मोफत व इतर माजी सैनिकांच्या या पाल्यांना सवलतीच्या दराने प्रवेश देण्यात येणार आहे. तरी या सुवर्णसंधीचा लाभ घेऊ इच्छिणाऱ्यांनी खालील पत्त्यावर त्वरित संपर्क साधावा असे माजी कॅम्प (सौ.) विद्या रत्नपारखी, जिल्हा सैनिक कल्याण अधिकारी, मुंबई उपनगर कळवितेत. (टीप - वरील दोन्ही वसतिगृहांत जागा शिल्लक राहिल्यास नागरी पाल्यांचा विचार केला जाईल.) अ) अधीक्षिका, सैनिकी मुलींचे वसतिगृह कलीना, सांताक्रूज (पूर्व) दूरध्वनी क्र. : 022-26670373 ब) अधीक्षक, सैनिकी मुलांचे वसतिगृह मालवणी, (मालाड पश्चिम) दूरध्वनी क्र. : 022-28681971

मराठी भाषा सदानंद तार, वेदर्भ स्वातंत्र्यवीर २५, निगडी, कवर्म षय- चंचोळकर, य. ६ राम गोसावी दिर, दिगंबर थोर संत गाचे प्रमुख पाहुणे- पराग करंदीकर, कुमार गोसावी, मधुकर गोसावी, डॉ. हिरेन निरगुडकर, स्थळ- श्रीक्षेत्र विठ्ठलवाडी मंदिर, सिंहगड रस्ता, सायं. ६ पुरस्कार प्रदान : राजहंस प्रकाशन आणि ढोले परिवार, रवींद्र गुर्जर, पुंडलिक वझे आणि ग्रंथाली प्रकाशनास रेखा ढोले स्मृतीपुरस्कार, हस्ते- मंगला गोडबोले, स्थळ- महाराष्ट्र साहित्य परिषदेचे माधवराव पटवर्धन सभागृह, टिळक रस्ता, सायं. ६.३० रात्री सांगीतिक कार्यक्रम : प्रभा एंटरप्रायझेस, द कपूरस डायरी कार्यक्रम, स्थळ- यशवंतराव चव्हाण नाट्यगृह, कोथरुड, रात्री ९.३०

रेशन, लिमिटेड

या सी, विंग बी, वाकडेवाडी, १६। वेबसाईट : www.hdfc.com

रिकन्स्ट्रक्शन ऑफ फायनान्शियल मॅनेज्मेंट नियम पैकी नियम क्र. ३ नुसार गी नोटीस उपरोक्त कायद्याच्या कलम च्या.

भेपोटी स्थावर मालमत्तेचे वर्णन

नं. १३, पुण्यधाम विल्डिंग ए, विंग II, पं. ३९/१/२/१ आणि स. नं. ३९/१/२/२, व शेरी, पुणे.

ISMT LIMITED

Regd. Office: Lunkad Towers, Viman Nagar, Pune 411 014, Maharashtra. Phone: 020-41434100 Fax: 020-26630779 E-mail: secretarial@ismt.co.in Web: www.ismt.com CIN: L27109PN1999PLC016417

EXTRACT OF THE STATEMENT OF FINANCIAL RESULTS FOR THE QUARTER AND YEAR ENDED MARCH 31, 2016

Sr. No.	Particulars	STANDALONE				CONSOLIDATED	
		Quarter Ended		Year Ended		Year Ended	
		31/03/2016	31/03/2015	31/03/2016	31/03/2015	31/03/2016	31/03/2015
		Unaudited	Unaudited	Audited	Audited	Audited	Audited
1.	Total Income from Operations (Net)	243.00	359.80	991.88	1,504.50	1,014.75	1,522.95
2.	Net Profit / (Loss) from ordinary activities after tax	(101.51)	(26.95)	(382.21)	(220.99)	(394.81)	(188.10)
3.	Net Profit / (Loss) for the period after tax (after Extraordinary items, Share of Minority Interest and Associate)	(101.51)	(26.95)	(382.21)	(220.99)	(394.78)	(188.06)
4.	Paid-up Equity Share Capital (Face Value of ₹ 5/- per share)	73.25	73.25	73.25	73.25	73.25	73.25
5.	Reserves (excluding Revaluation Reserve as per Balance Sheet of previous year)	(343.46)	(4.23)	(343.46)	(4.23)	(403.28)	(46.72)
6.	Earnings per share (before extraordinary items and after Share of Minority Interest and Associate) (of ₹ 5/- each) Basic and Diluted (₹)	(6.93)	(1.84)	(26.09)	(15.08)	(26.95)	(12.84)
7.	Earnings per share (after extraordinary items and Share of Minority Interest and Associate) (of ₹ 5/- each) Basic and Diluted (₹)	(6.93)	(1.84)	(26.09)	(15.08)	(26.95)	(12.84)

Notes: 1. The above is an extract of the detailed format of Quarterly and Annual Financial Results filed with the Stock Exchanges under Regulation 33 of the SEBI (Listing Obligations and Disclosure Requirements) Regulations, 2015. The Full format of the Quarterly/ Annual Financial Results are available on the Stock Exchange websites (www.nseindia.com & www.bseindia.com) and also on the Company's website (www.ismt.com).
2. The Auditors have qualified the Financial Results in respect of Investment in and receivables from a subsidiary company, Recoverability of amounts from Maharashtra State Electricity Distribution Company Limited and Minimum Alternate Tax Entitlement. The details of the same forms part of the Audited Financial Results which are available on the aforesaid websites.
3. The above results have been reviewed by the Audit Committee and approved by the Board of Directors at their respective meetings held on May 27, 2016.

Place : Pune
Date : May 27, 2016
For ISMT Limited
Rajiv Goel
Chief Financial Officer